



The Next Generation of LCD Video Walls

GPO Display's NEX-Series LCD Video Walls provide superior connectivity, improved daisy-chain capabilities, and a wide range of bezel and brightness options for the most demanding applications

Extended daisy-chaining of 4K video signals

Next Gen models support daisy-chaining of 4K/60Hz signals via DisplayPort through arrays as large as 5x5. This makes large video walls visually stunning, easy to configure, and cost-effective.

Image Rotation

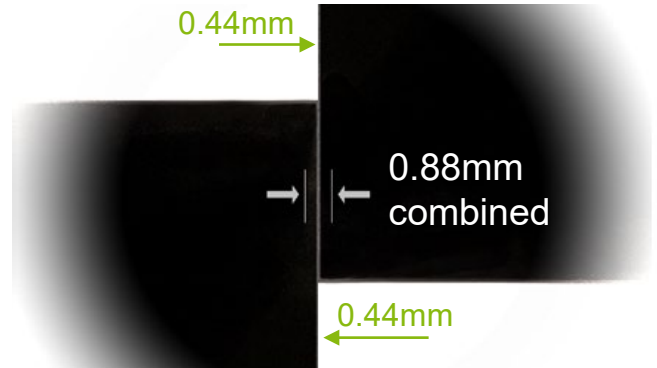
NEX-series displays feature built-in image rotation and image flipping, making it easier for users to display a wide range of content types without a costly processor or adjustments at the source level.



Features

Razor Narrow Bezel

Razor Narrow Bezel (RNB) displays feature a tiled gap of 0.88mm (0.44mm even bezel on all sides of the display). This Razor Narrow tiled gap makes for truly stunning arrays at any size.

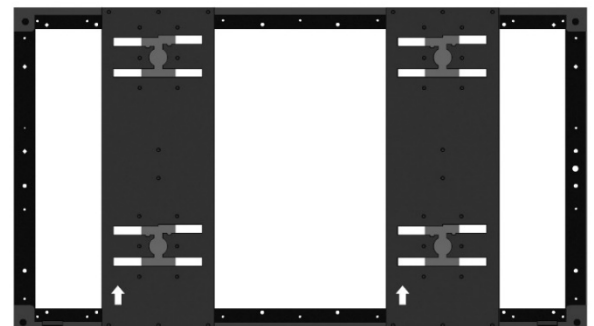


Extended 4K/60Hz daisy-chaining

Next Gen video walls allow for the daisy-chaining of video walls up to 5 wide by 5 high via DisplayPort, supporting signal resolutions up to 3840x2160 at 60Hz. Unlike displays which daisy-chain via HDMI or DVI, Next Gen video wall displays support 4:4:4 color space at 4K/60Hz. This makes for large, stunning video wall arrays showing 4K content without compression.

Auto-Aligning H-Mount

GPO Display's exclusive H-Mount video wall mounting system ensures quick, easy installation with virtually automatic alignment. The H-Mount frame matches the outline dimensions of the display, making for less measuring & re-measuring during the installation process. The unique channel system allows for access to individual displays without the dismounting of neighboring displays. H-Mounts even come with side covers/trim at no additional cost. Most importantly, H-Mounts prevent shifts in alignment over time- an issue commonly associated with front-accessible mounting solutions. For video wall arrays with three or fewer rows of displays, the H-Mount is the ideal solution.



Features

Expanded input connectivity

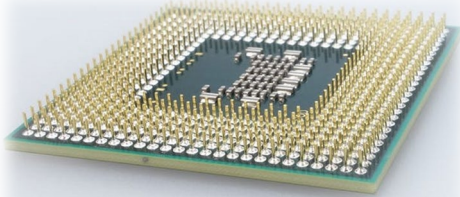
NEX-series displays feature five 4K-capable inputs. All three HDMI 2.0 inputs and both DisplayPort 1.4a inputs are HDCP 2.2 compliant. Each input is capable of receiving up to a 3840x2160/60Hz signal, which can then be carried through the DisplayPort daisy-chain allowing for large, impactful arrays with minimal headend equipment.

HDMI™

X3



X2



State-of-the-Art scaling

GPO Display uses the highest-grade scaler chips in our video wall solutions, ensuring a clean, crisp image with minimal frame lag. Dynamic backlight control ensures a maximum dynamic contrast ratio for deep, true blacks and vibrant video. Enhanced noise reduction and ghost/ringing reduction filter minimize unsightly artifacts.

Master set control

Users can define a “Master Set” which allows for the control of all displays at once using a single IR remote controller. This is a convenient control option for cases where a costly third-party control system is out of reach. GPO Display’s control software also presents a no-cost, easy control option via serial or Ethernet.

NEX55MLR

Panel Attributes

Screen Size (Diag.)	55"
Panel Technology	Commercial-grade IPS / Direct-LED backlight
Resolution	1920 x 1080
Pixel Pitch (mm)	0.630 (H) x 0.630 (V)
Surface Treatment	Hard coating (3H), Anti-glare treatment of front polarizer
Brightness (Typ.)	500nit
Contrast Ratio (Typ.)	1,400:1 / 500,000:1 (DCR)
Displayable Colors	10bit(D), 1.07 Billion colors
Viewing Angle	178° (min) / 178° (min)
Response Time (Typ. GTG)	8ms
Aspect Ratio	16:9
Tiled Bezel Width	0.88 mm (combined)
Refresh rate	60Hz

Dimensions, Power & Other

Dimension (W x H x D) , Weight(typ.)	Net	47.68" x 26.84" x 3.51" , 54lbs
	Gross	53.5" x 33" x 12" , 70lbs
VESA Pattern (mm)		600 X 400
Electrical Ratings		AC 100 - 240V (50/60Hz)
Power Consumption (Typ.)		160W / 1.9A
BTU rating (Typ.)		546
Mullion Compensation		SICP software or Remote control
Operating Temperature		32°F - 104°F
Operating Humidity Range		10~90%
Possible Display Type		Landscape and Portrait-Compatible
Industrial Reliability		60,000+ Hours
Warranty		Three Years – Cover 3 / Quick 3

Connectivity

DisplayPort	2 x Input, 1 x Output
HDMI (up to 3840 x 2160)	3 x Input
RS-232	1 x Input, 1 x Output
Ethernet (RJ45 for control & monitoring)	1 x Input
USB (for service only)	1 x Input
Audio (3.5mm jack)	1 X Output

- 24/7/365-Rated
- Built-in Video Wall Processor (up to 11x11 Natural Mode)
- On/Off scheduler (no separate control system required)

Overheat Prevention System

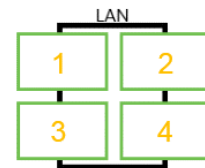
In order to prevent dangerous overheating, a warning message will appear for one minute when overheating occurs, followed by preventative, automatic powering off of the displays



Quick Presets Function

Abbreviated serial commands allow users to get the most out of their video walls without a costly windowing processor or matrix switcher with scaling capabilities.

Quick Presets allow you to recall a source layout with a single serial command, reducing transition times between presets and minimizing costly, time-consuming programming of control systems.



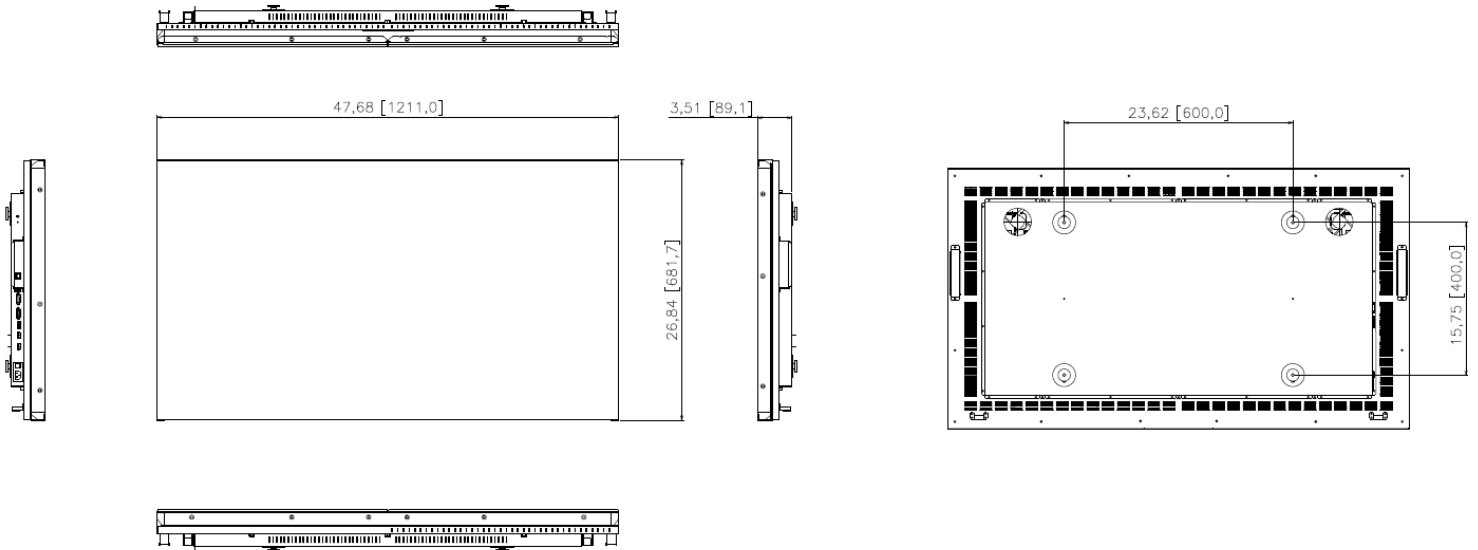
IP and RS-232 control options

Users can control NEX-series displays via IP-based control or RS-232. In cases where no third-party control system is in place, GPO Display's video wall control software is an easy-to-use alternative included at no additional cost.

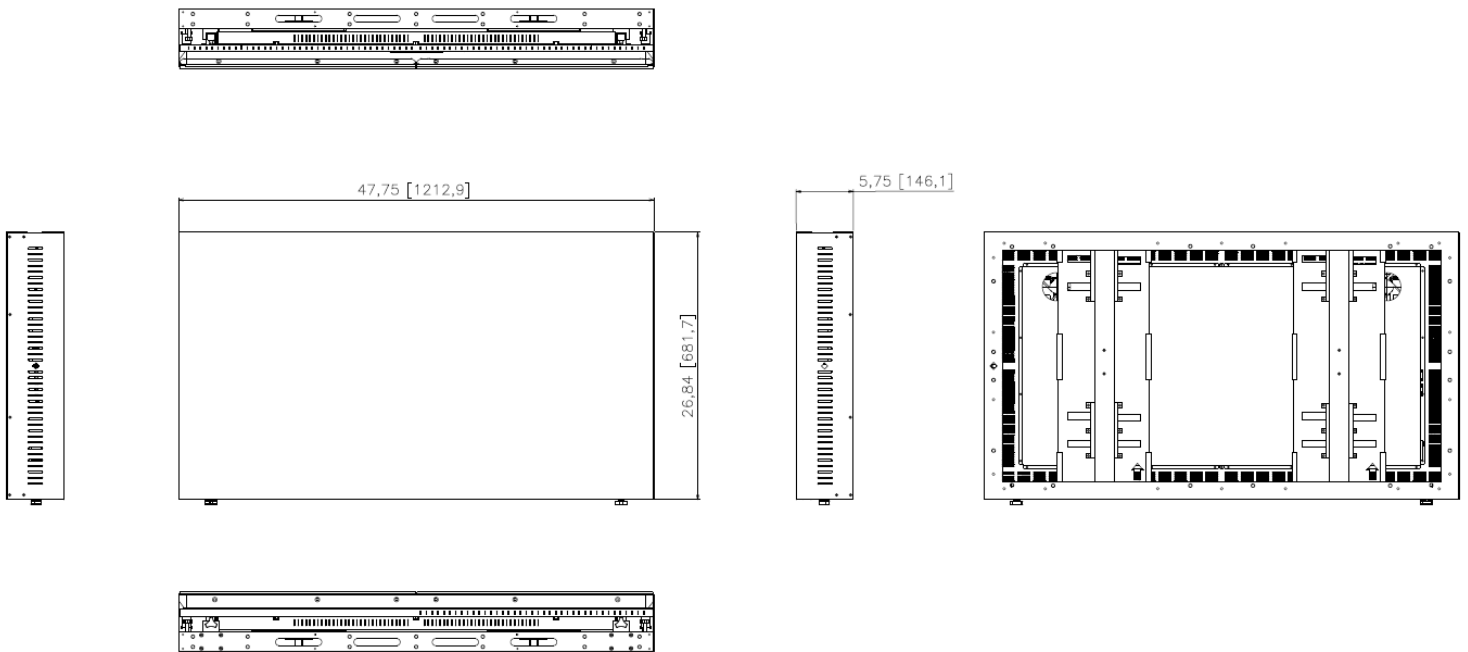
- Includes [Video Wall Control Software](#)
- Includes necessary cables for daisy-chain of both control and video signals

Mechanical Drawing

Set Drawing



Set + H-Mount Drawing



Note: GPO Display may change specifications and designs without notice

Accessories with product: RS-232 cable, HDMI cable, AC Power Cord, Remote Control, Batteries for remote control, User manual & Software on USB Flash Drive

