

# TechnoMirror Display

Kiosk Housing with Touch



## MR Kiosk (Touch Series)

TechnoMirror Displays represent a unique approach to digital signage that seamlessly blends into a wide range of spaces. Built-in [Android-based media players](#) and integrated GPO Display [content management software](#) make them a turnkey, all-in-one signage solution. Proximity sensors turn dressing rooms, makeup counters and lobbies into marketing opportunities by initializing signage content when viewers approach. The display can then return to an unassuming mirror surface when users depart. This series includes 10-point capacitive touch which turns your content into an even more engaging, interactive experience.

### FEATURES

#### Hybrid Display

The TechnoMirror more than just the sum of its parts. Take the simple utility of a standard mirror and add the power of digital signage. The result is a hybrid display which both engages viewers at a higher rate than more traditional forms of digital signage and offers a truly enhanced mirror experience.

#### Built-to-Order Housing

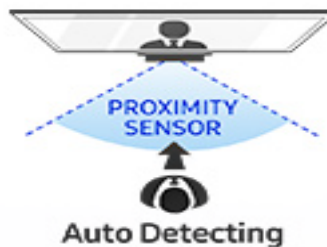
These TechnoMirror displays feature kiosk housing that can be modified in terms of color, mirror angle, and height. Stand bases can be outfitted with wheels or anchor positions and even locking cabinetry can be expanded for the housing of a wide range of devices.

#### Easy Content Management and High-Quality Playback

Content updating, scheduling and playback is made easy with the inclusion of an Android-based signage player and content management platform. This allows for the management of multiple mirrors, HD playback and timely updates to content.

#### Proximity Sensor

All TechnoMirror displays include a proximity sensor, either triggering content playback or standby mode when a viewer approaches. This allows the TechnoMirror to appear as a standard mirror until a viewer is within range, making it all the more eye-catching.



### Applications

- Retail stores & changing rooms
- Hotels, restaurants and cafes
- Nightclubs & bars
- Health clubs
- Restrooms
- Hair & beauty salons
- Car showrooms
- Museums & visitor attractions

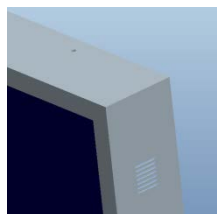
Customizable design and frame color



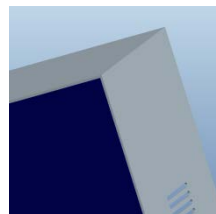
Extended



Normal



Cover Frame



Edgeless



Portrait and Landscape-compatible

\* GPO Display may change specifications and designs without notice.

# Specification



## Panel Attributes

Model	MR42KHT	MR46KHT	MR46KUT	MR55KHT	MR55KUT	MR75KUT
Screen Size (Diag.)	42"	46"	46"	55"	55"	75"
Panel Technology	Commercial-grade S-PVA / LED edge-lit LCD					
Resolution	1920 x 1080					
Active area (H x V, mm)	930.24 x 523.26	1018.08 x 572.67	1018.08 x 572.67	1209.6 x 680.4	1209.6 x 680.4	1650.2 x 928.3
Refresh rate	60Hz					
Brightness (Typ.)	700nit	700nit	2,500nit	700nit	2,500nit	2,500nit
Contrast Ratio (Typ.)	4,000:1	4,000:1	5,000:1	4,000:1	5,000:1	5,000:1
Displayable Colors	16.7M (8-bit)					
Viewing Angle	178° (min) / 178° (min)					
Response Time (Typ. GTG)	8ms	8ms	8ms	8ms	6ms	6ms
Aspect Ratio	16:9					

## Power & Other

Operation (Hour/Day)	24/7					
Electrical Ratings	AC 100 - 240V (50/60Hz)					
Power Consumption (Typ.)	120W	130W	270W	180W	320W	450W
Operating Temperature	32°F - 104°F					
Operating Humidity Range	20~80%					
Industrial Reliability	50,000+ Hours					
Warranty	One Year (Parts & Labor)					

## Features

Tempered Mirror Glass	Yes
Motion Sensor	Yes
Android Signage Player	Yes
Content Management Software	Yes
PCAP Touch	Yes
Built-in Speaker	5W x 2

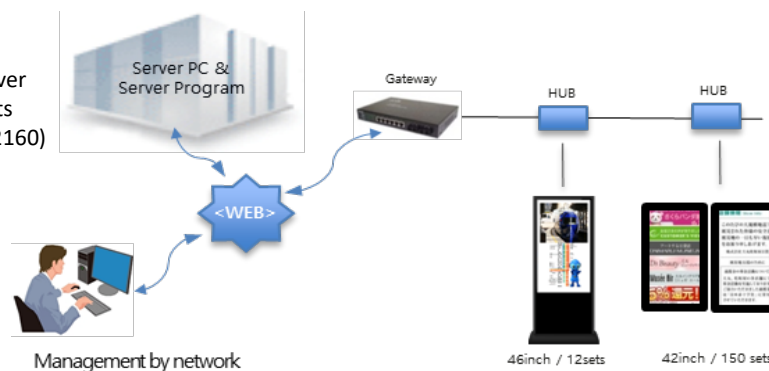
## Connectivity

HDMI	2
VGA	1
RS232C	1
USB ( Plug-and-play Media player)	1
SD Card (Media player)	Optional
Audio port	1 (Phone jack), 1 RCA

## Android Signage Player

Our [Signage Players](#) feature silent, fanless operation along with powerful server software. This allows for network updating of large, multi-screen deployments via single, or multiple operators. These players also support up to 4K (3840x2160) content, and are the perfect complement to all of our displays.

- Robust, Compact & Energy-efficient Digital Signage
- Support for multiple window of content
- Real-time or scheduled content playback
- Automatic content download recovery



## Android Signage Player

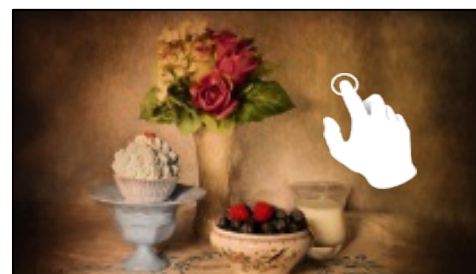
CPU	ARM
RAM	2GB
STORAGE	32GB
OS	Android 4.4
Network Interface	10/100/1000Mb BaseT LAN; Wi-Fi (optional)
Display Output	HDMI X1
Fan Cooling	Fanless design
Mounting Bracket	Included



\* GPO Display may change specifications and designs without notice.

## Touch Specifications

Technology	Projected Capacitive Touch
Resolution	15360 x 8640
Touch Accuracy	Within 2mm
Response Time	15-30ms
Interface	USB 2.0, HID-Compliant, Plug & Play
Simultaneous Touch Points	10pt
Supported OS	WIN7 / WIN8 / Android / MAC / Linux
Min. Touch Object Size	9mm



PCAP Touch

## Optional Features

### Built-in mini 4K PC (IMM700)

This small form factor PC is the perfect complement to a wide range of GPO Display products. From [InteracTables](#) to [4k monitors](#), the IMM700's powerful graphics card and support of Ultra HD content allows users to get the most of their displays. Dual HDMI outputs allow for high-res extended desktops and "pick 'n' flick" sharing using [Lima](#) software.



### PC Specification

Operating System	Windows 10
CPU	Intel Broadwell Core™ i5-5250U 2.7Ghz
GPU	Intel® HD Graphics 6000
RAM	DDR3L 8GB
ROM	128G SSD (Can be extended to 512GB, please contact our customer service for specific requirements about the ROM)
Wi-Fi Connectivity	802.11 B/G/N 300M WIFI
Ethernet	WLAN Card/LAN Card 1000M
Bluetooth	3.0
Video Supported	3GP, AVI, H.264, MP4
Audio Supported	AAC, ACC, MP3, OGG, WAV
Office Format	Excel, PPT, Word
E-book Format	PDF, TXT
HDMI Port	Dual Standard HDMI Male 1.4b (support up to 3840 x 2160)
Other Interfaces	SD Card Slot: Yes USB Host: Yes 1 x USB 3.0+1 x USB2.0 Micro HDMI slot: Yes RJ45 connector: Yes DC Jack: Yes 3.5mm Headphone Jack: Yes Burglar-proof Padlock: Yes
Power	100-240V 12V 2A
Power Consumption	15W
Others	Skype: Supported   YouTube: Supported   Speaker: Supported MIC: Supported
Dimension	230 x 180 x 45 (mm)
Dimension (Packed)	315 x 260 x 80 (mm)